

NEMA 1-15R Plug Receptacles



Volex offers NEMA 1-15R plug receptacles with a 2-pronged polarized plug on one side and a polarized receptacle on the other side. This RoHS 2 compliant product has a maximum rating of 10A at 125V and is designed and manufactured with UL/c-UL and CSA safety approvals to meet the following standards:

UL 498

UL 817

CSA Std. C22.2



NEMA 1-15R PLUG RECEPTACLES

Standard		UL 498, UL 817, CSA Std. C22.2	
Max. Rating		10A, 125V	
Safety Approval		UL/c-UL, CSA	
Catalogue No.	Cable Type	Size	Matching Connector
US115RPS	SPT-2	2 x AWG 18	VNBC7S, VAC7A, VAC7PS
	NISPT-2	2 x AWG 18	VNBC7S, VAC7A, VAC7PS

NEMA 1-15R PLUGS TECHNICAL INFORMATION

Volex US115RPS is a NEMA 1-15R plug receptacle that is typically used with Class II appliances.

Safety approvals cover two different cable types: SPT-2 and NISPT-2 with conductor sizes 2C x AWG 18.

It can be matched with various connectors such as:

VNBC7S

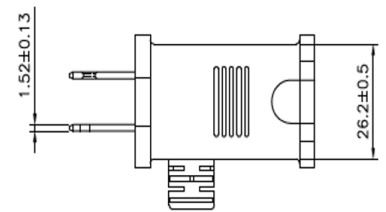
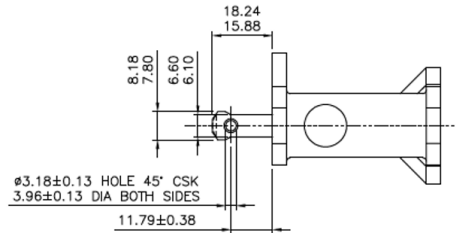
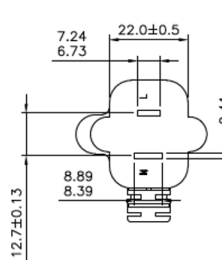
VAC7A

VAC7PS

This NEMA 1-15R plug receptacle from Volex is for use in North America Class II appliances. It was designed for special use only on telephone equipment with an IEC C7 configuration. See photos, drawings, and chart below for details.

NEMA 1-15R PLUGS TECHNICAL DRAWINGS

US115RPS



Contact us at sales@volex.com
for assistance in finding the right solution for your needs.