

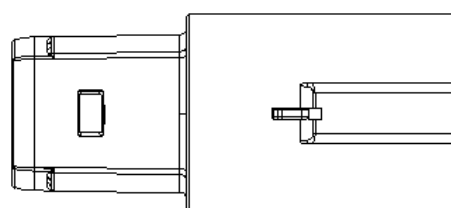
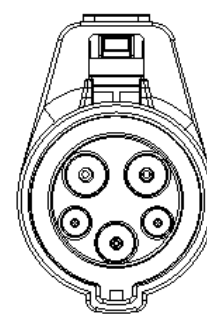
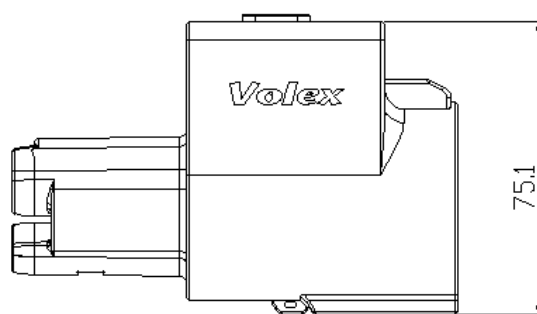
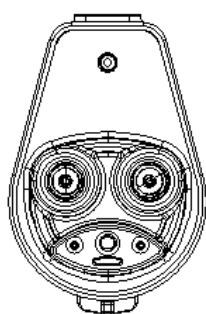
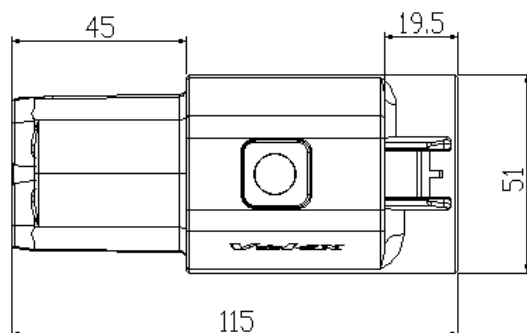
J1772 TO NACS

EV CHARGING

ADAPTER



PRODUCT DEFINITION	
Charging Standard	SAE J1772, SAE J3400
Standard / Regulations	IEC 62196-1, IEC 62196-2
Approvals & Certification	UL 2252
DIMENSIONS OF ADAPTER	
Width	51.0 mm
Height	75.1 mm
Depth	115.0 mm
ENVIRONMENTAL SPECIFICATIONS	
Ambient Temperature (Operation)	-30°C to +50°C
Ambient Temperature (Storage / Transport)	-40°C to +80°C
Maximum Altitude	3000 m (above sea level)
Operating Humidity	Up to 90% RH, Condensing
Degree of Protection (Mated with Socket / Plug)	IP54
Degree of Protection (Adapter)	IP67 (Unmated)
ELECTRICAL AND MECHANICAL PROPERTIES	
Rated Voltage	250V AC
Rated Current	Up to 80A
Rated Voltage for Signal Contacts	30V
Rated Current for Signal Contacts	2A
Insulation Resistance	≥ 100 MΩ
Mating Cycles (J1772 Inlet and NACS Connector)	≥ 10,000
Insertion Force and Withdrawal Force	< 100 N
MATERIAL	
Adapter Enclosure	Plastic
Terminal	Copper
Plating	Silver / Nickel Plating or On Request
Flammability Rating	UL 94V-0



Contact us at sales@volex.com
for assistance in finding the right solution for your needs.